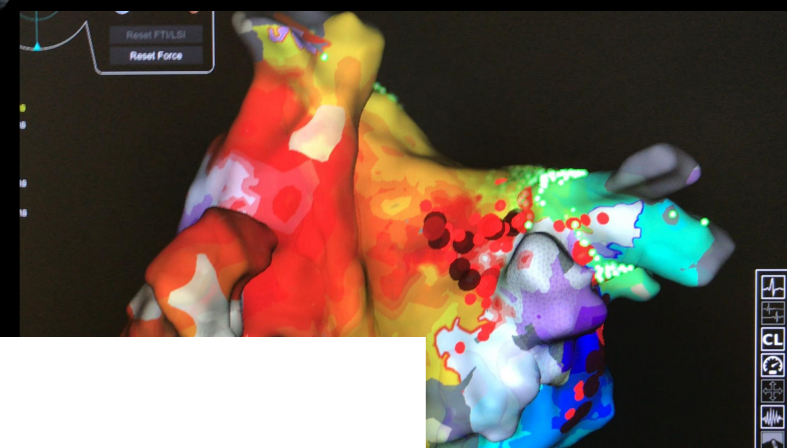
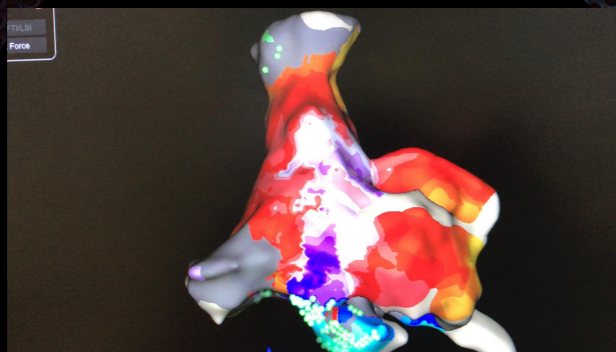


TIPS and TRICKS

Electra 2022

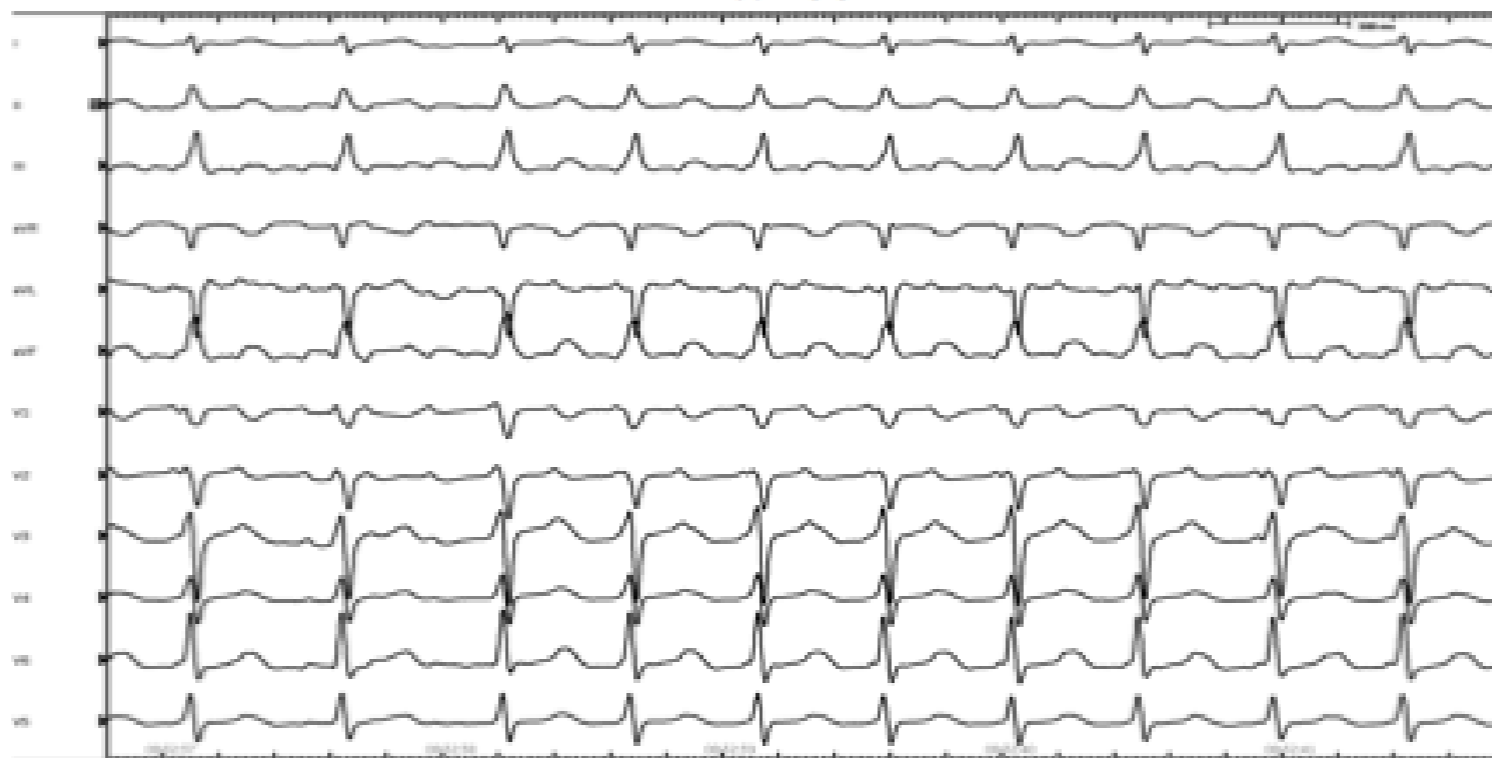
Ange Ferracci
Hôpital Saint Joseph Marseille





Patient

First ECG



Patient history

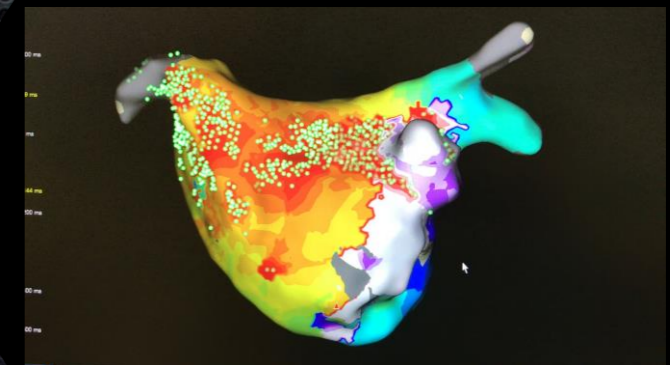
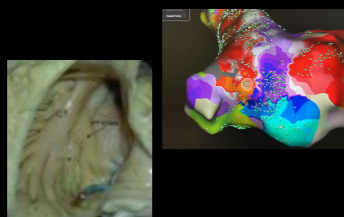
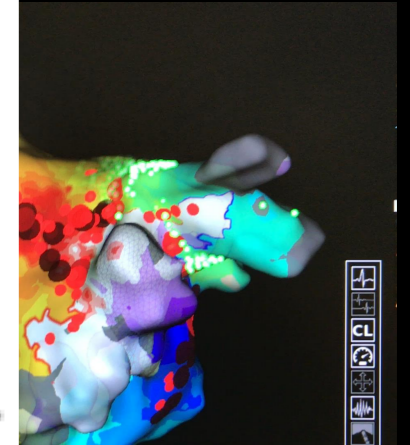
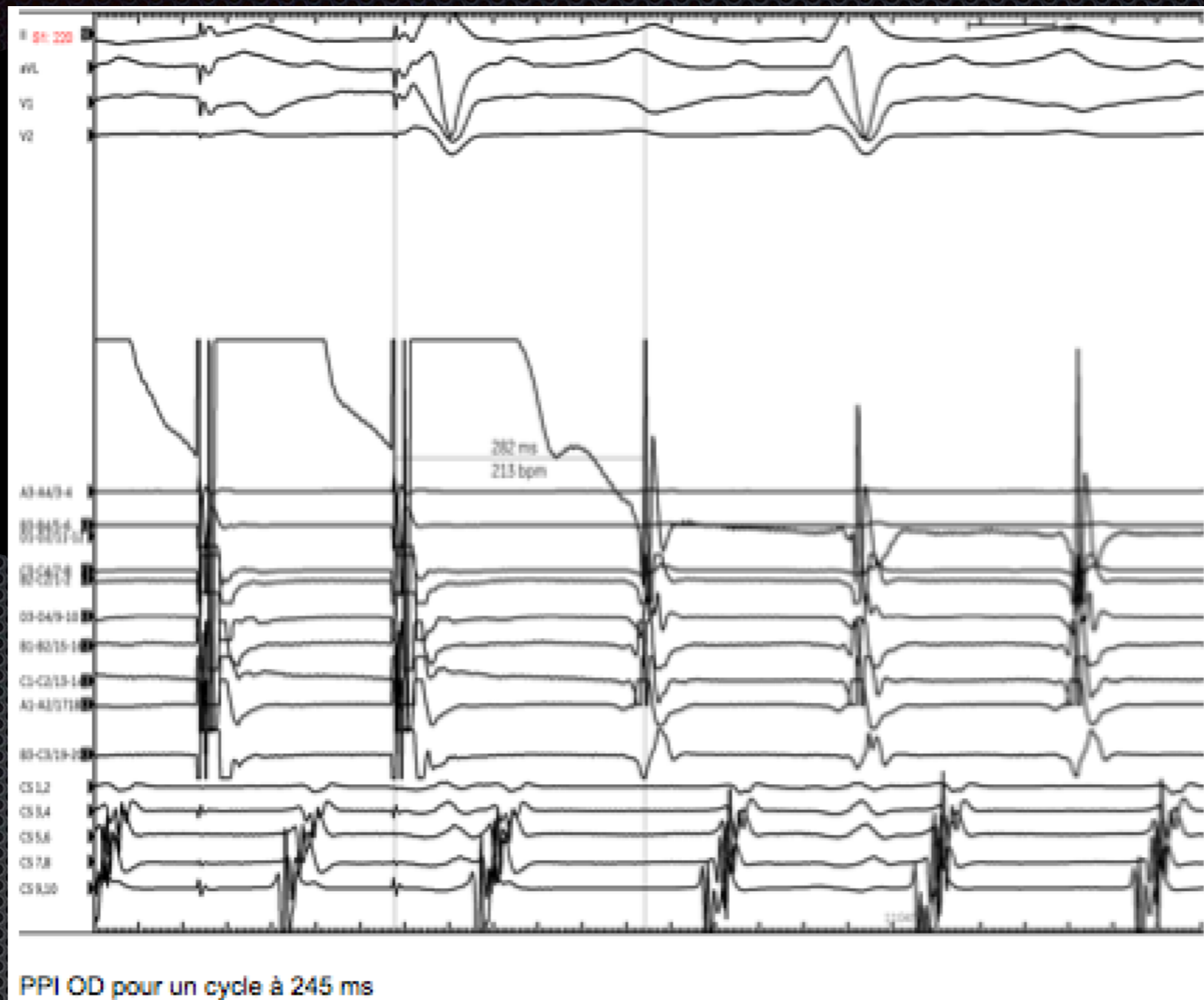
- 72 years
- 96 kg
- Male
- 2012: FA PVI
- 2018: RF Marshall vein

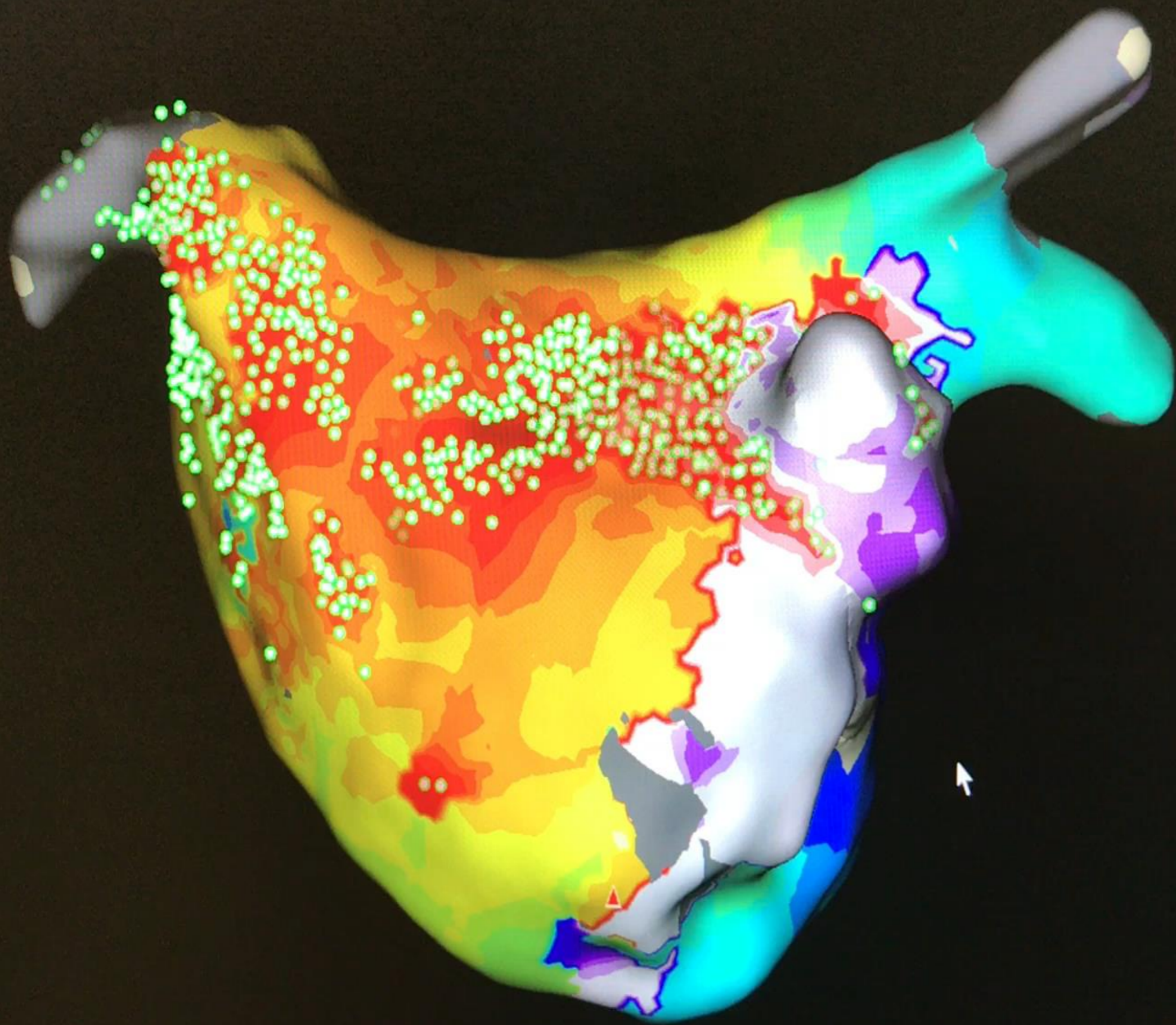
Proprietary and confidential — do not distribute

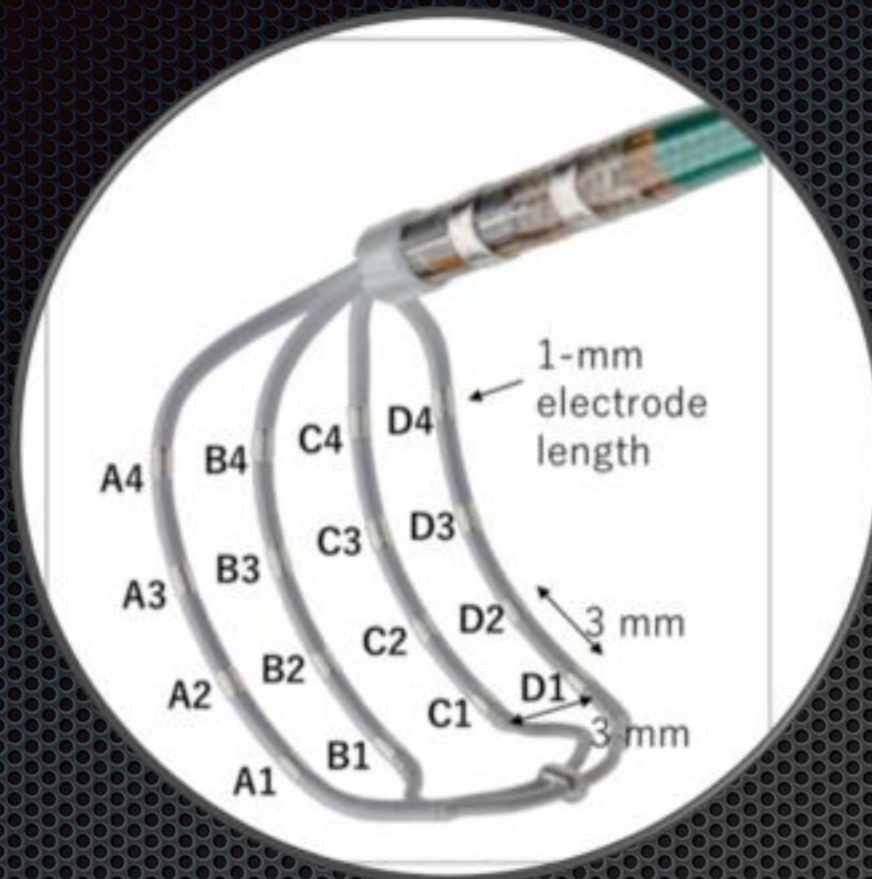
Patient preparation

- Inform consent
- General anesthesia
- Flutter Cycle Length (CL) ~245 ms









Bipolaire:

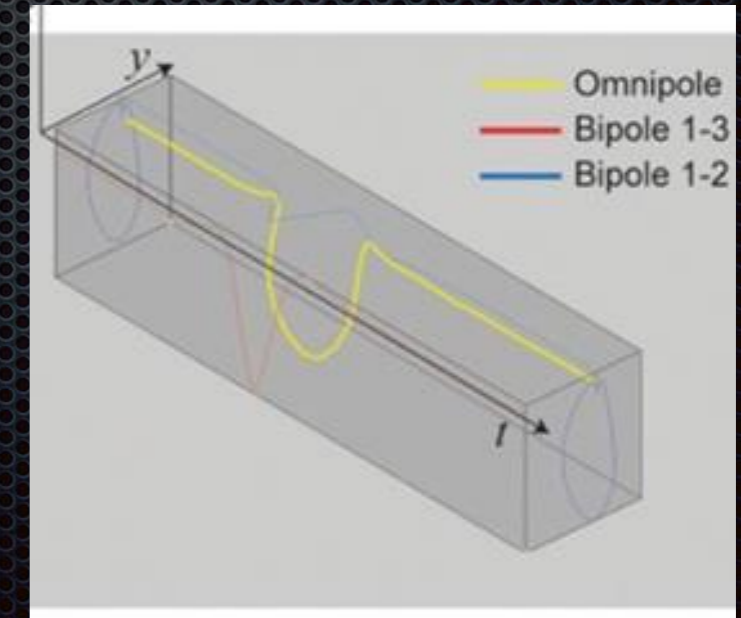
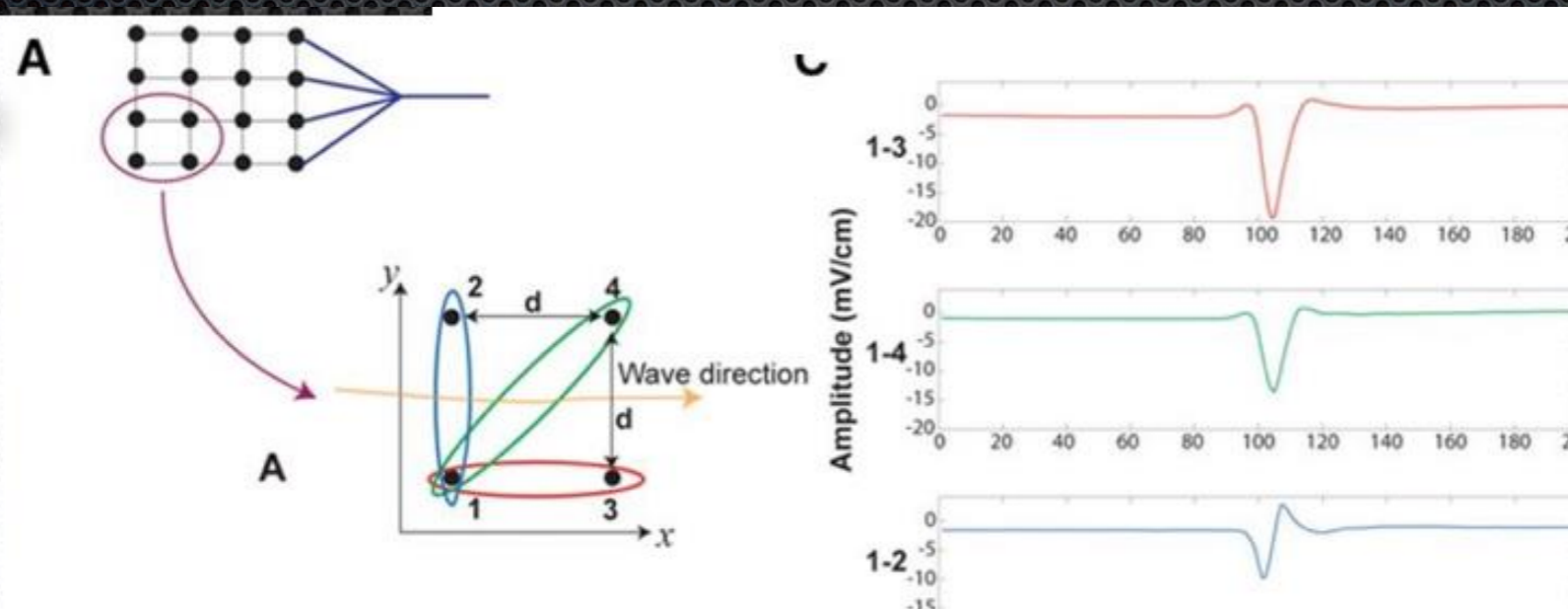
- ✓ Activation dépendante de l'orientation du front d'onde

Unipolaire:

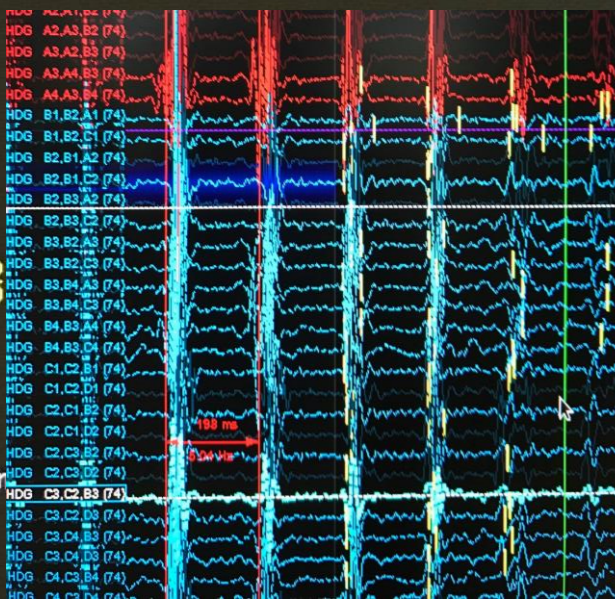
- ✓ Activation dépendante du farfield

Omnipolaire :

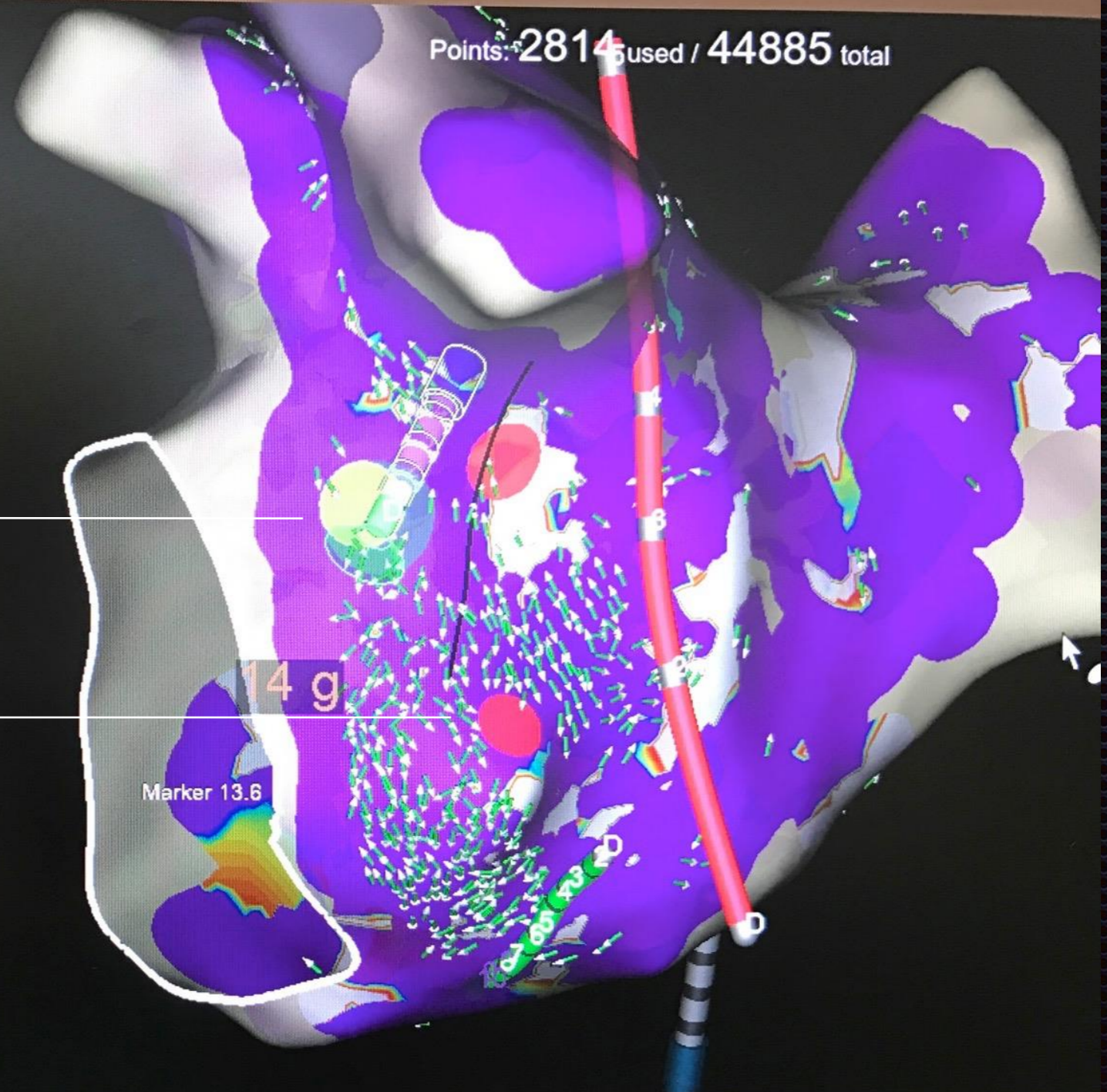
- ✓ Polarise l'activation du bipolaire
- ✓ Potentialise l'activation de l'unipolaire par l'activation profonde epicardique



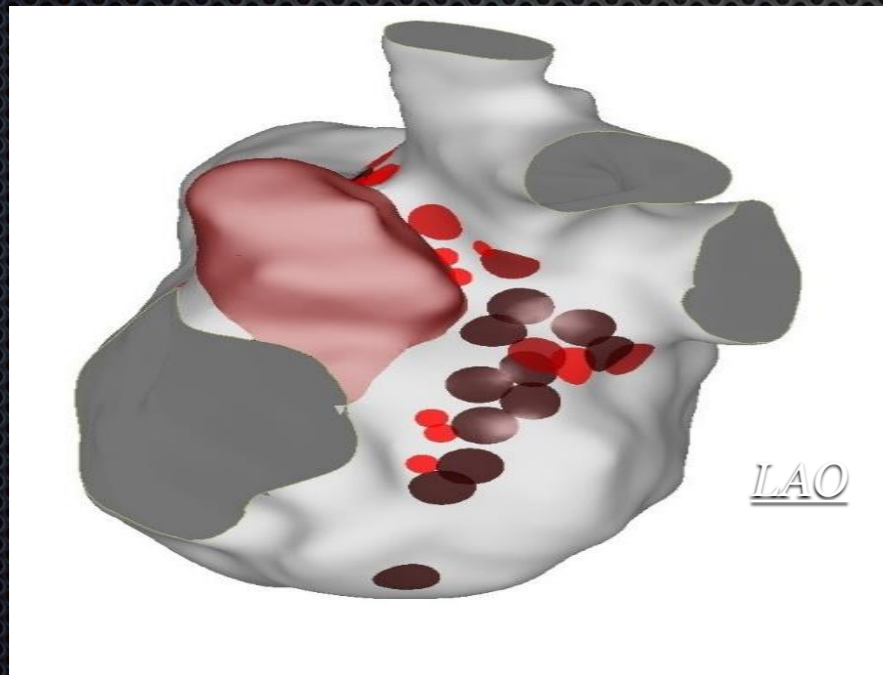
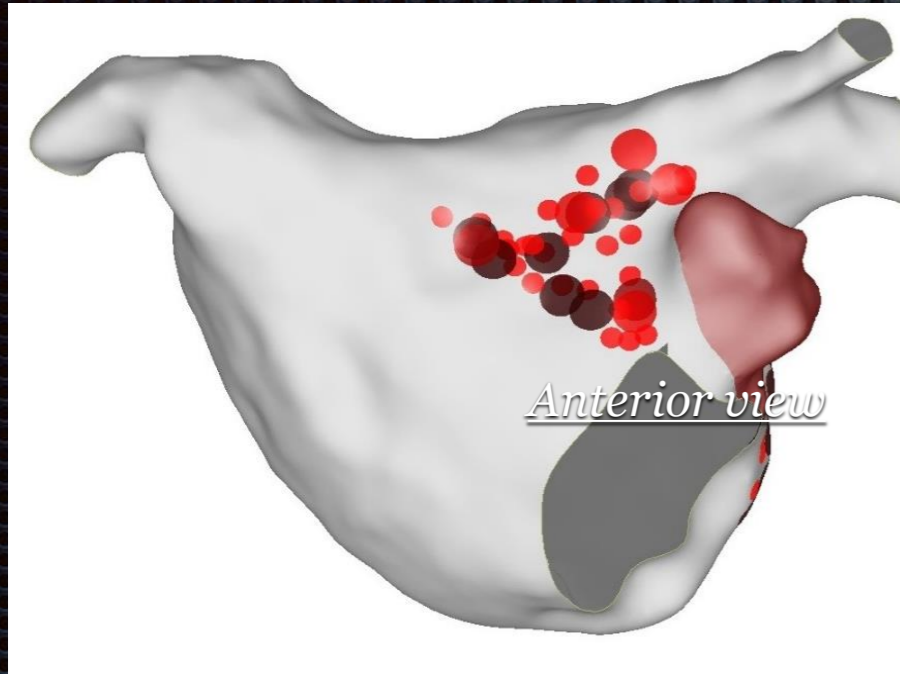
500 ms



Points: 2814 used / 44885 total



Left Atrium ablation



AutoMark & Contact Force

AutoMark Presets

AutoMark

Contact Force

Color Metric

LSI

Size Metric

Same As Color

Metrics Setup

LSI

Value	Color	Diameter (mm)
6.0		6
5.0		6
4.0		6
< 4.0		3

Disable AutoMark Collection

Placement Settings

AutoMark Region (r)

3.5

mm

Min AutoMark Time

2

s

Away Time

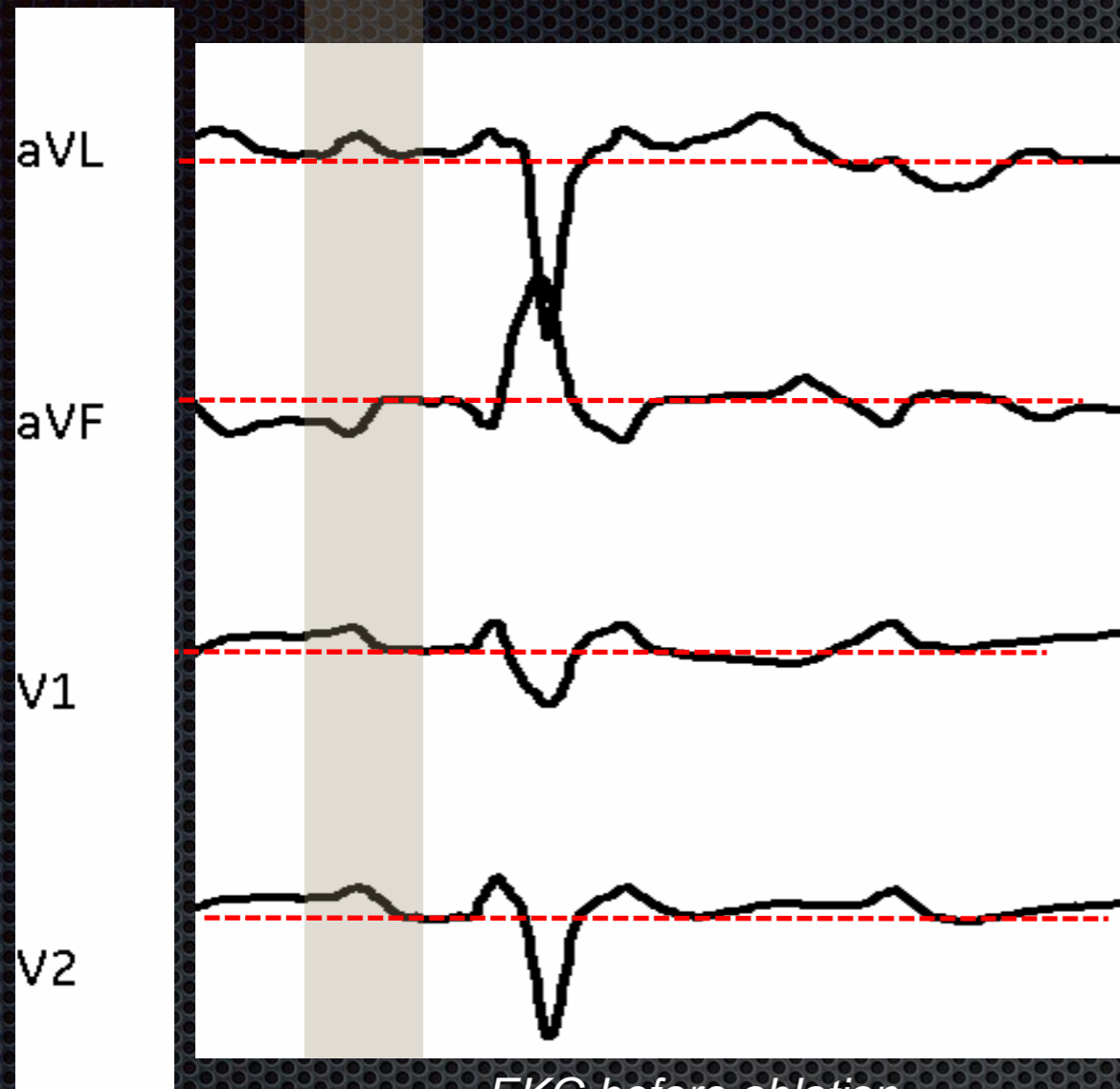
7.0

s

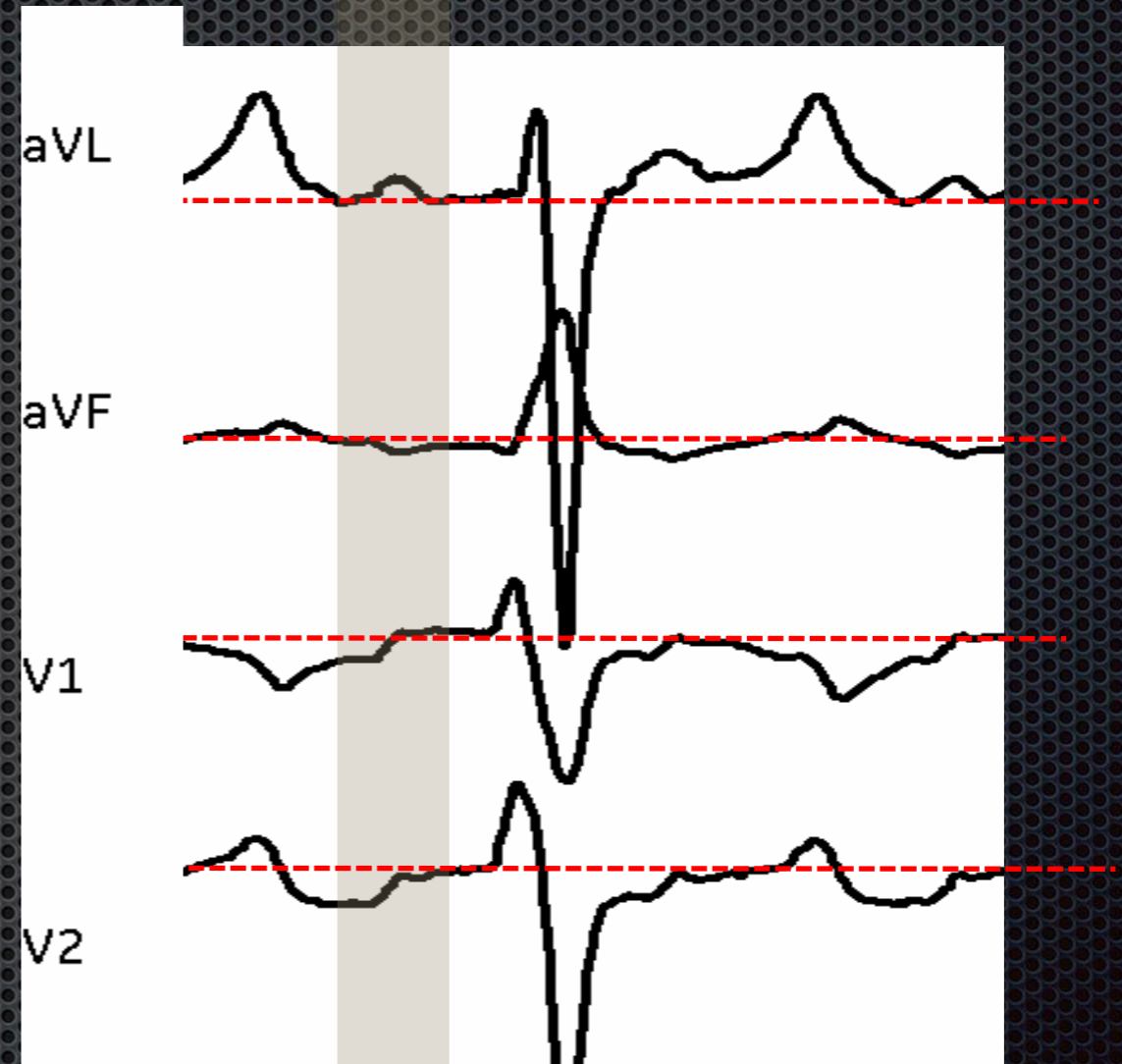
Visible Thresholds

After ablation points, CL stays at ~**245 ms** with **same CS activation** (proximal – distal).

EKG analysis after ablation

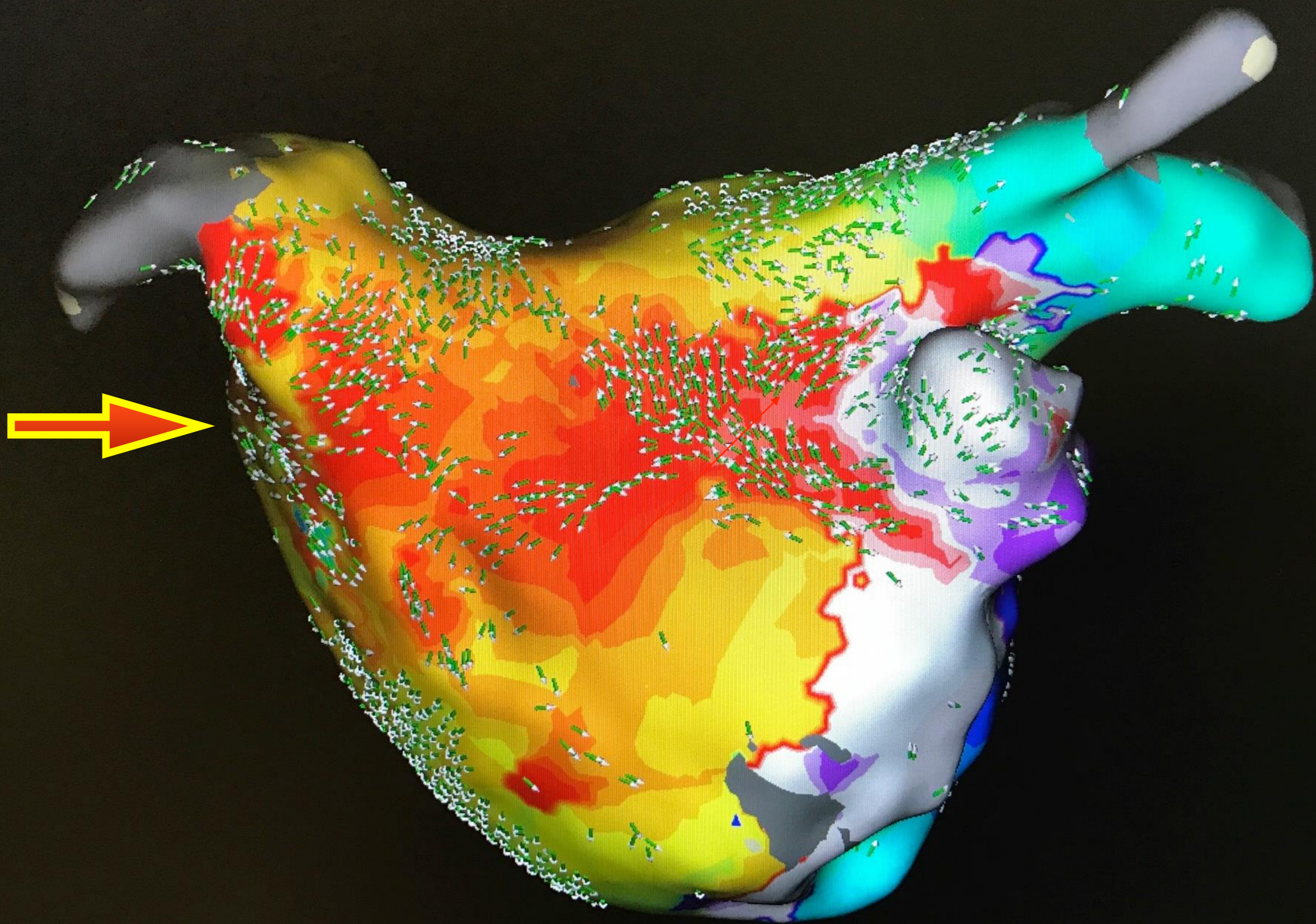


EKG before ablation

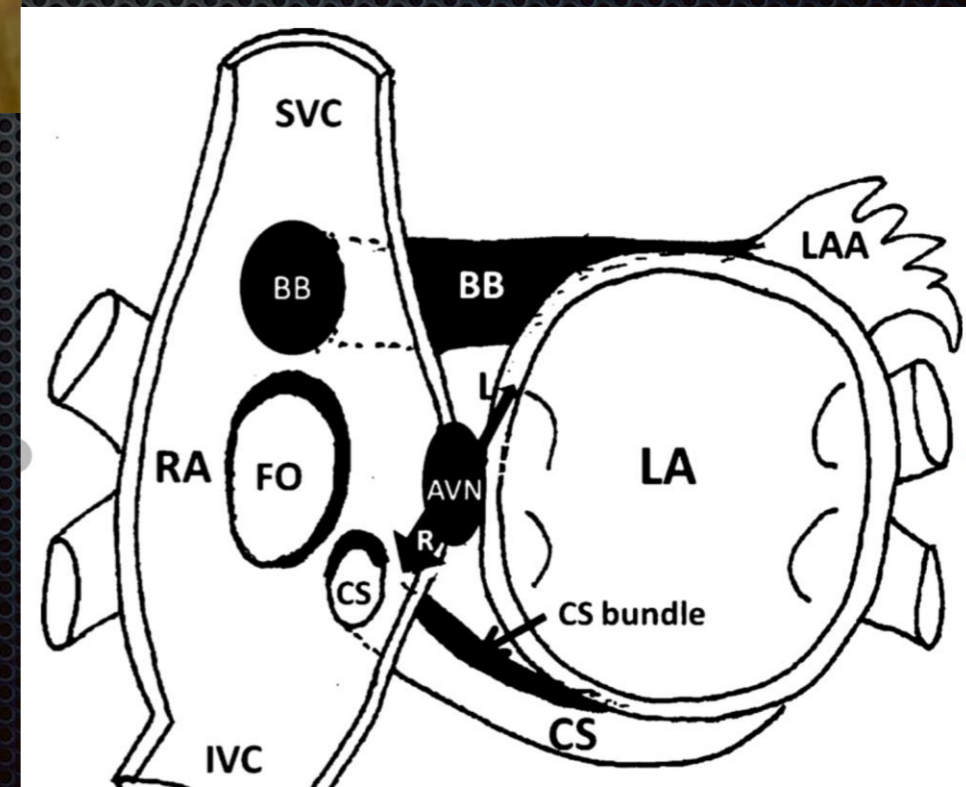
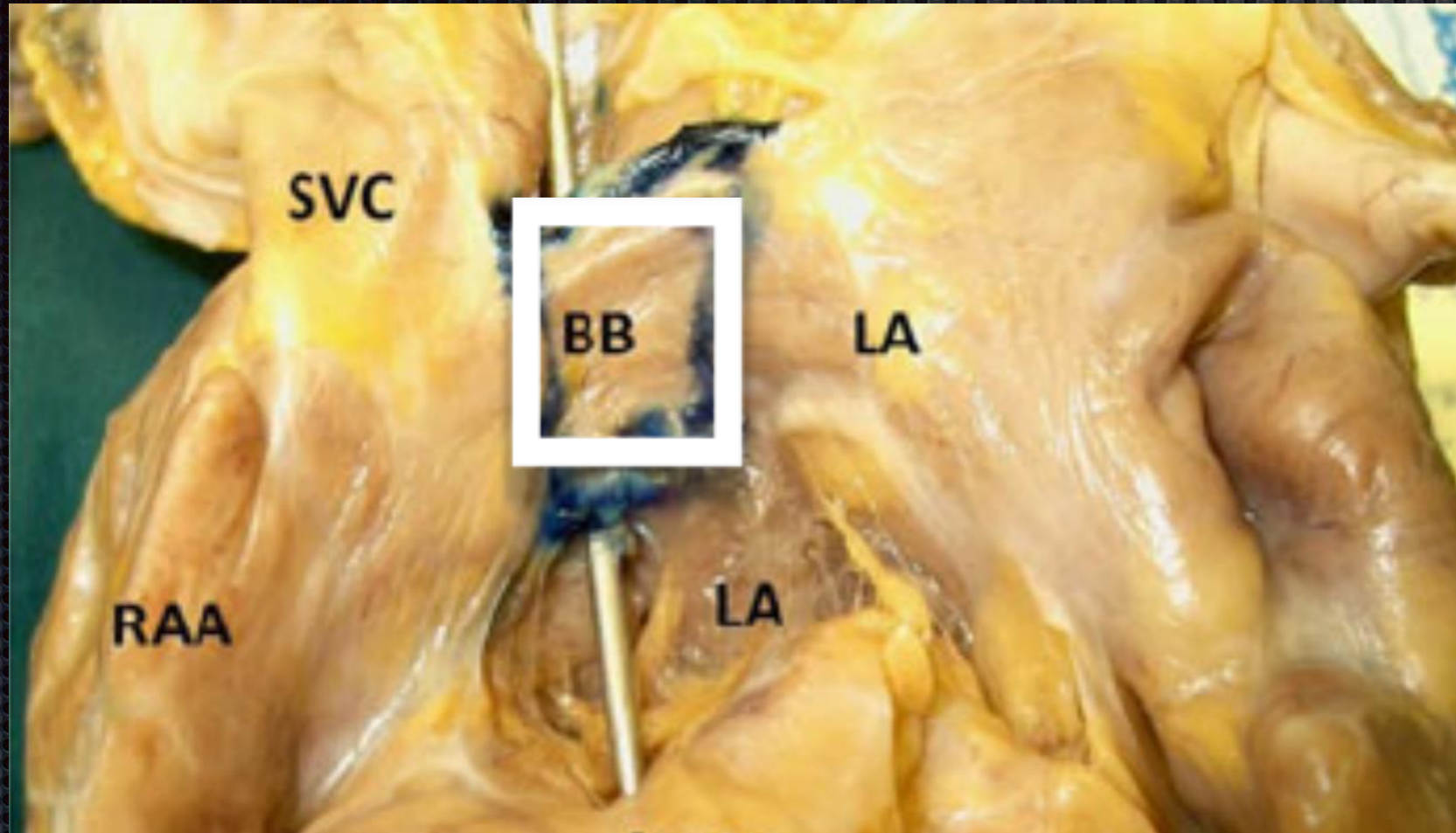


EKG after ablation

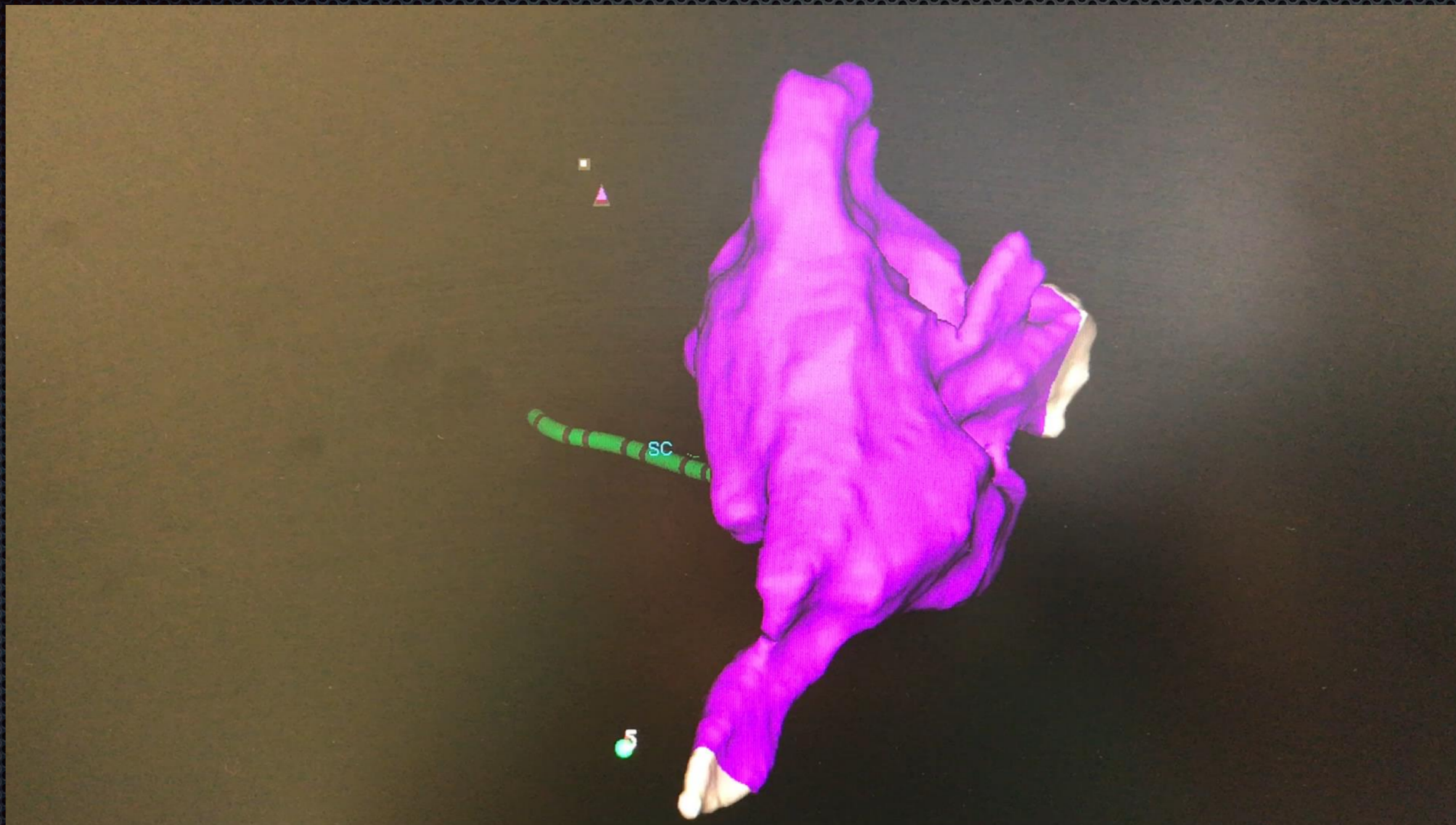
EKG changes **V1** and **V2** are more **negatives** (or **biphasics**) so the AFL could be in Right Atrium now.



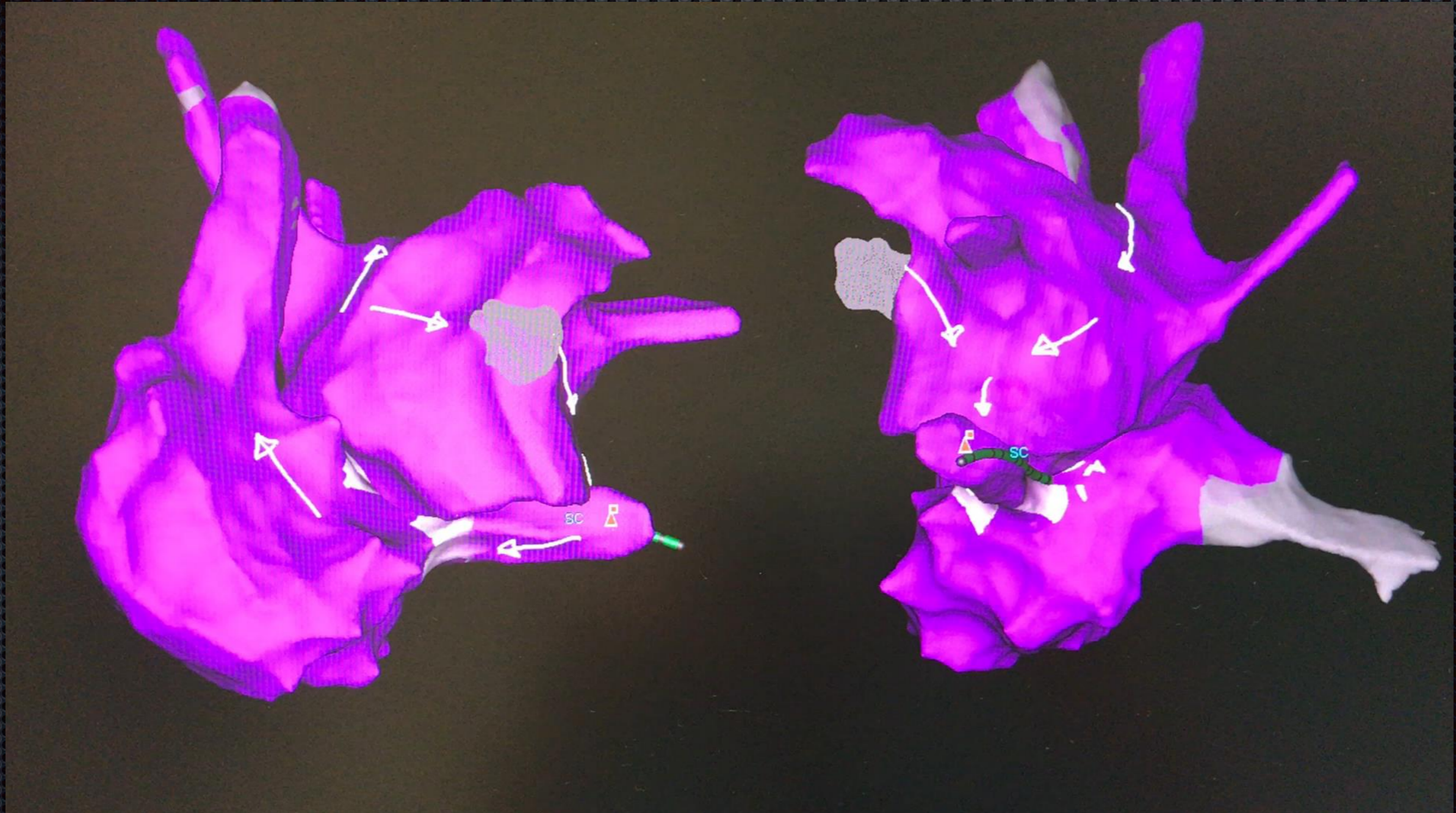
Bachmann's bundle



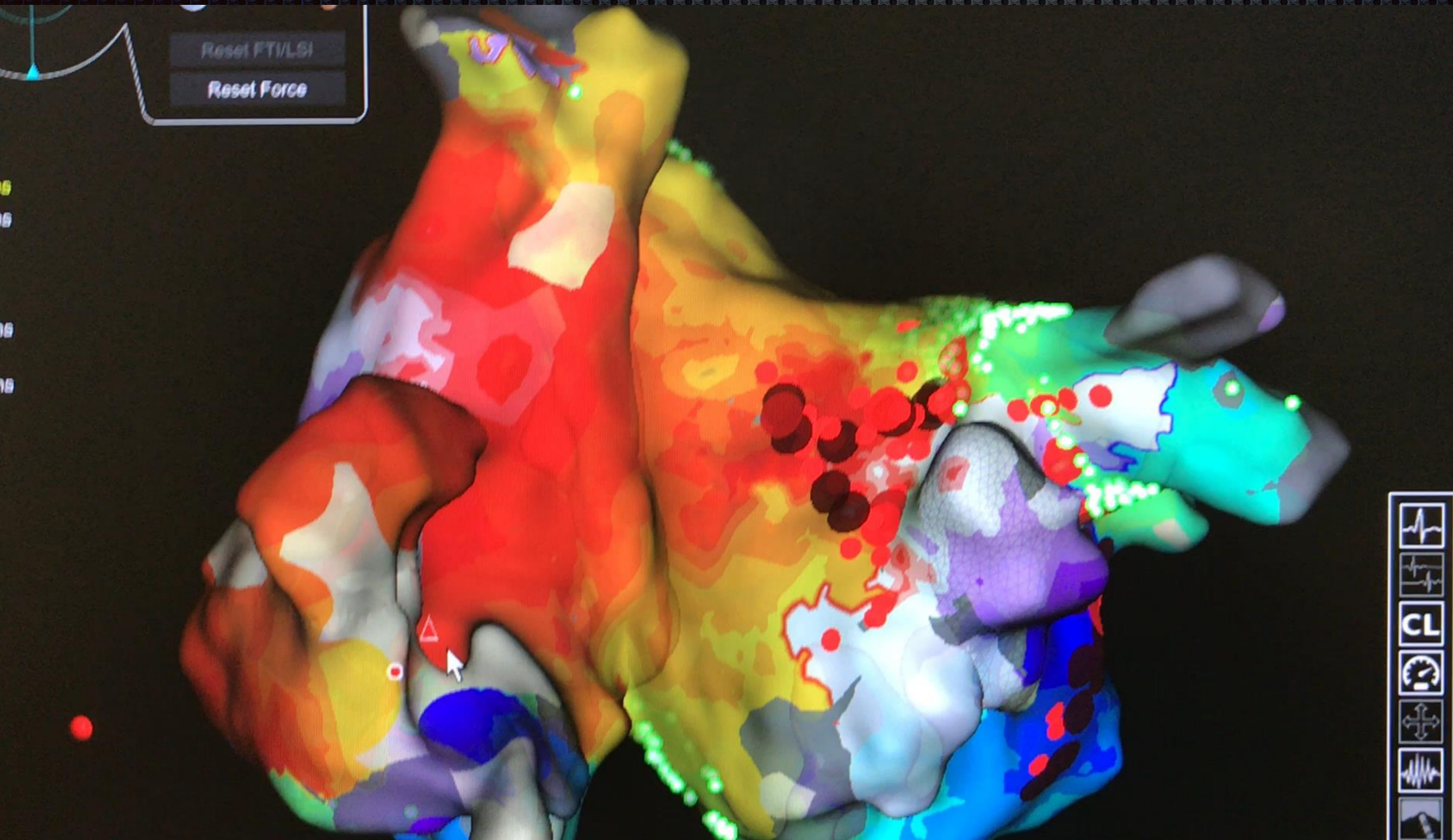
Bachmann's SVC tak ?



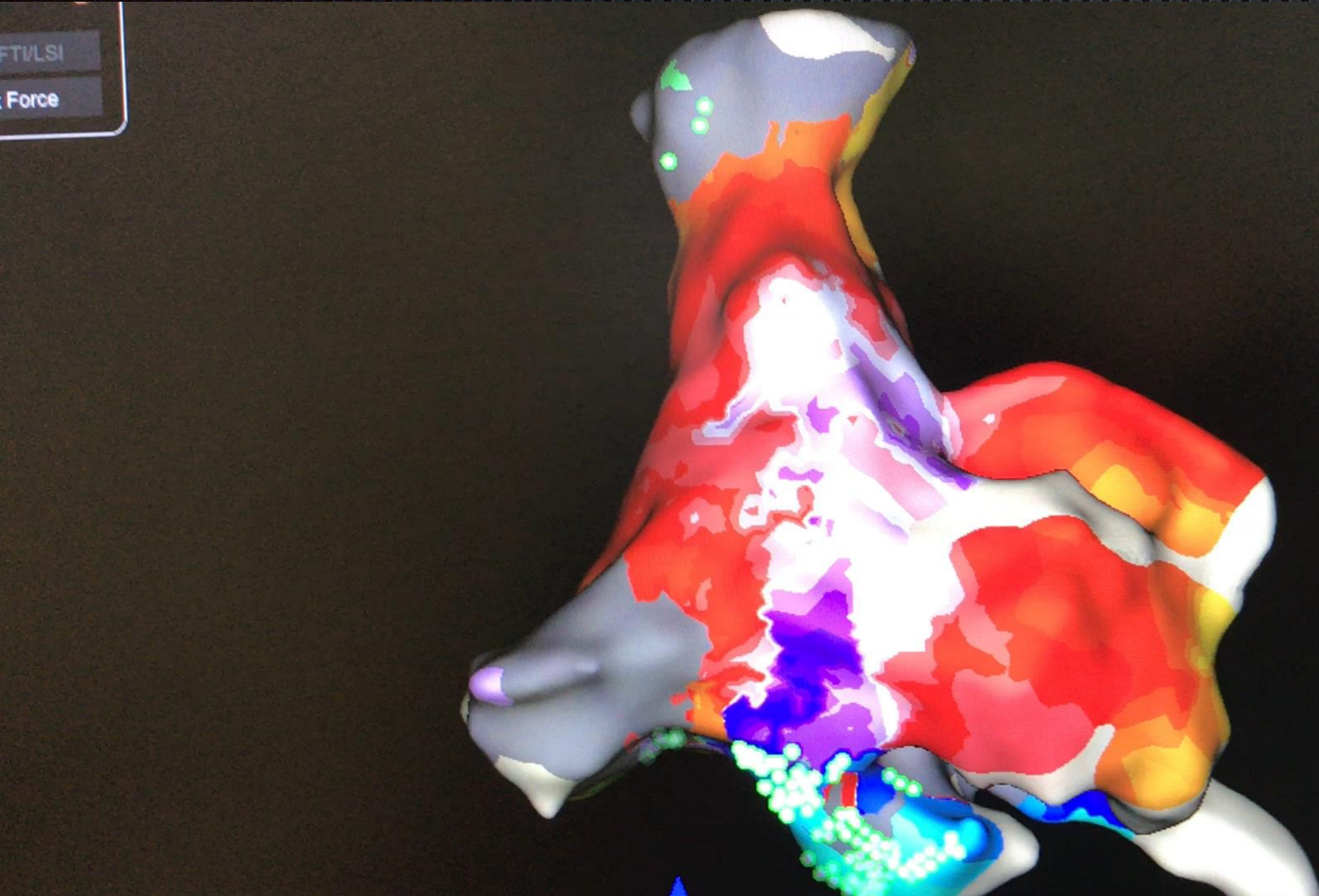
Biatrial flutter Marshall mediated ?



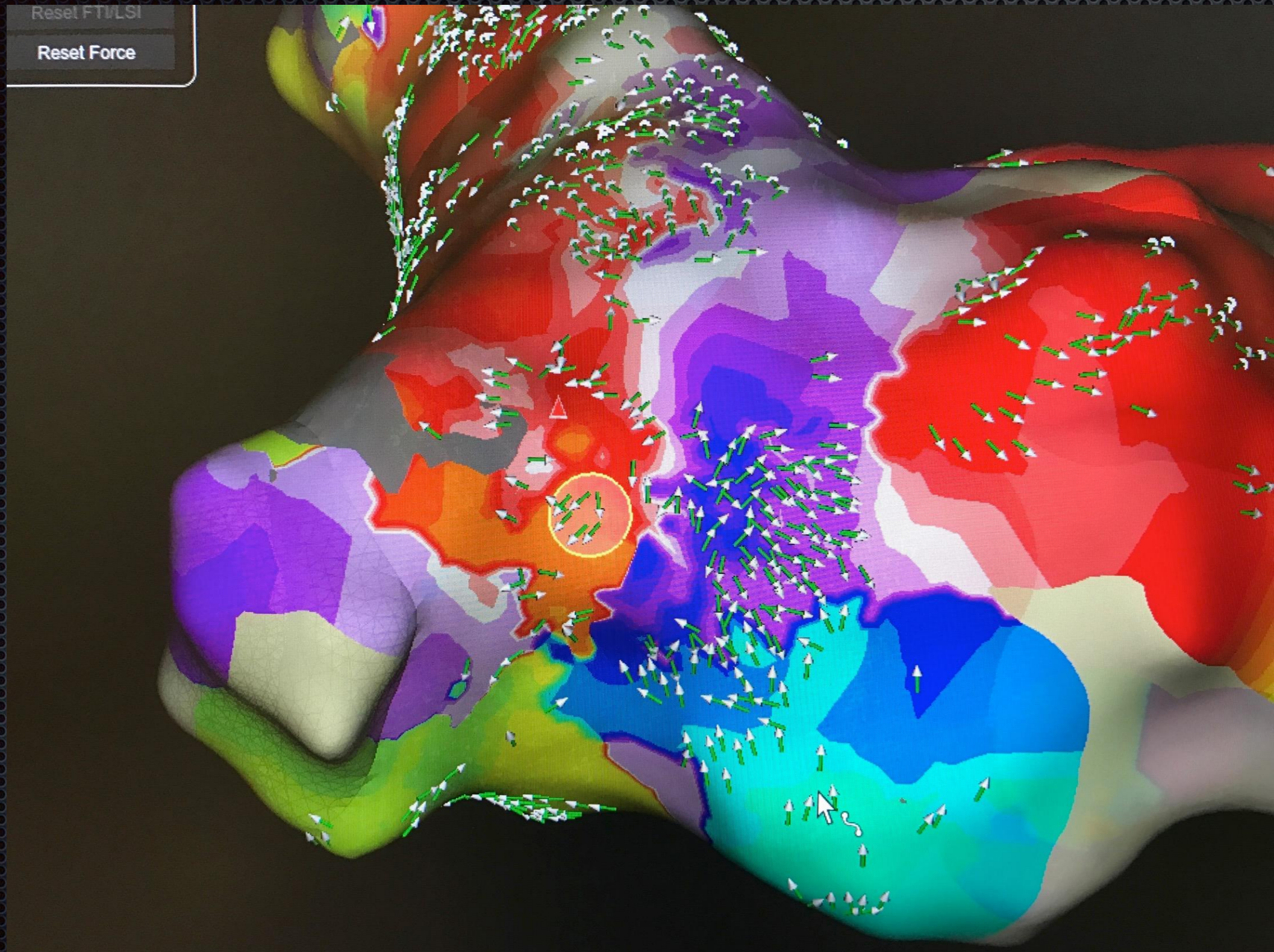
Biatrial map

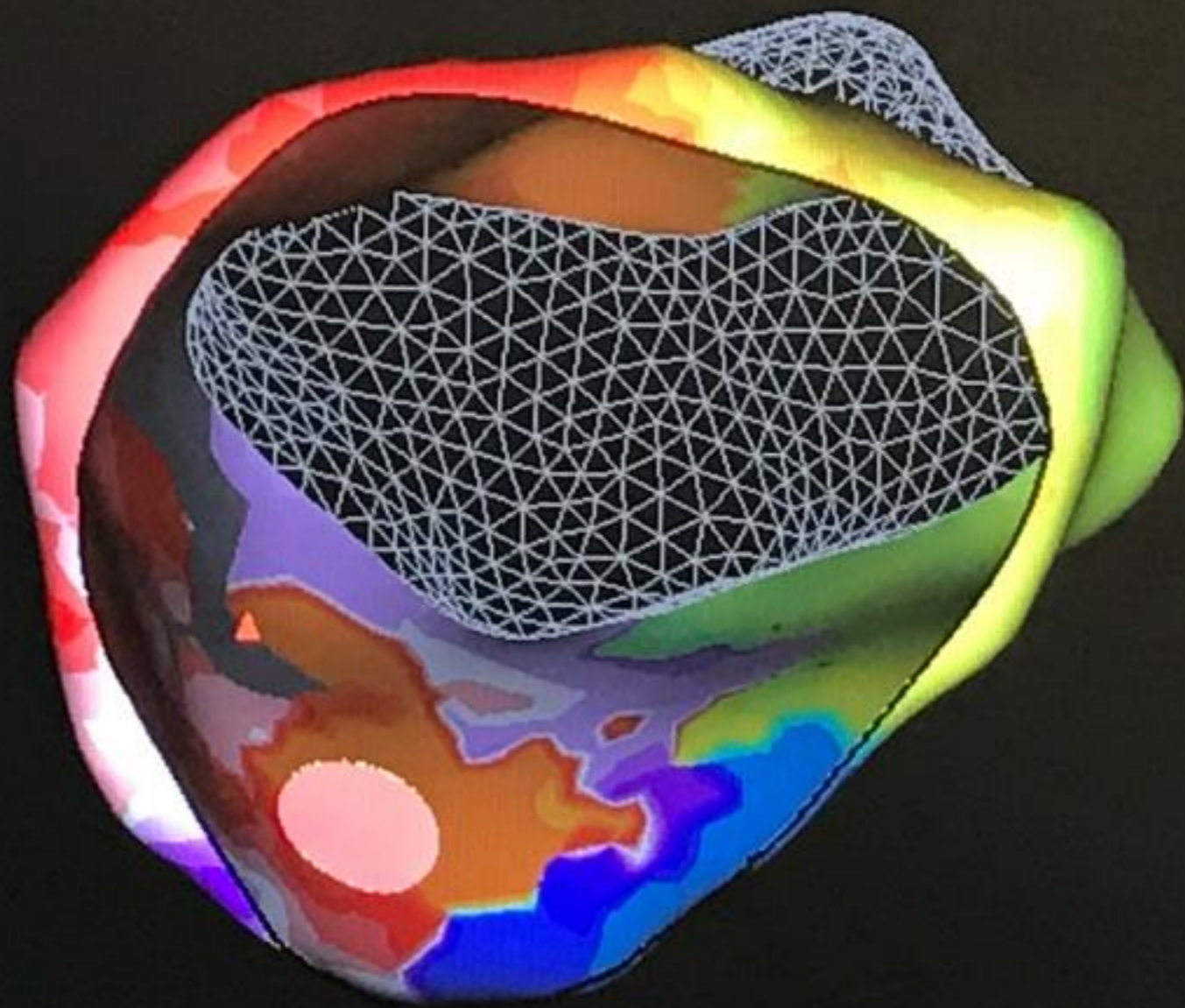
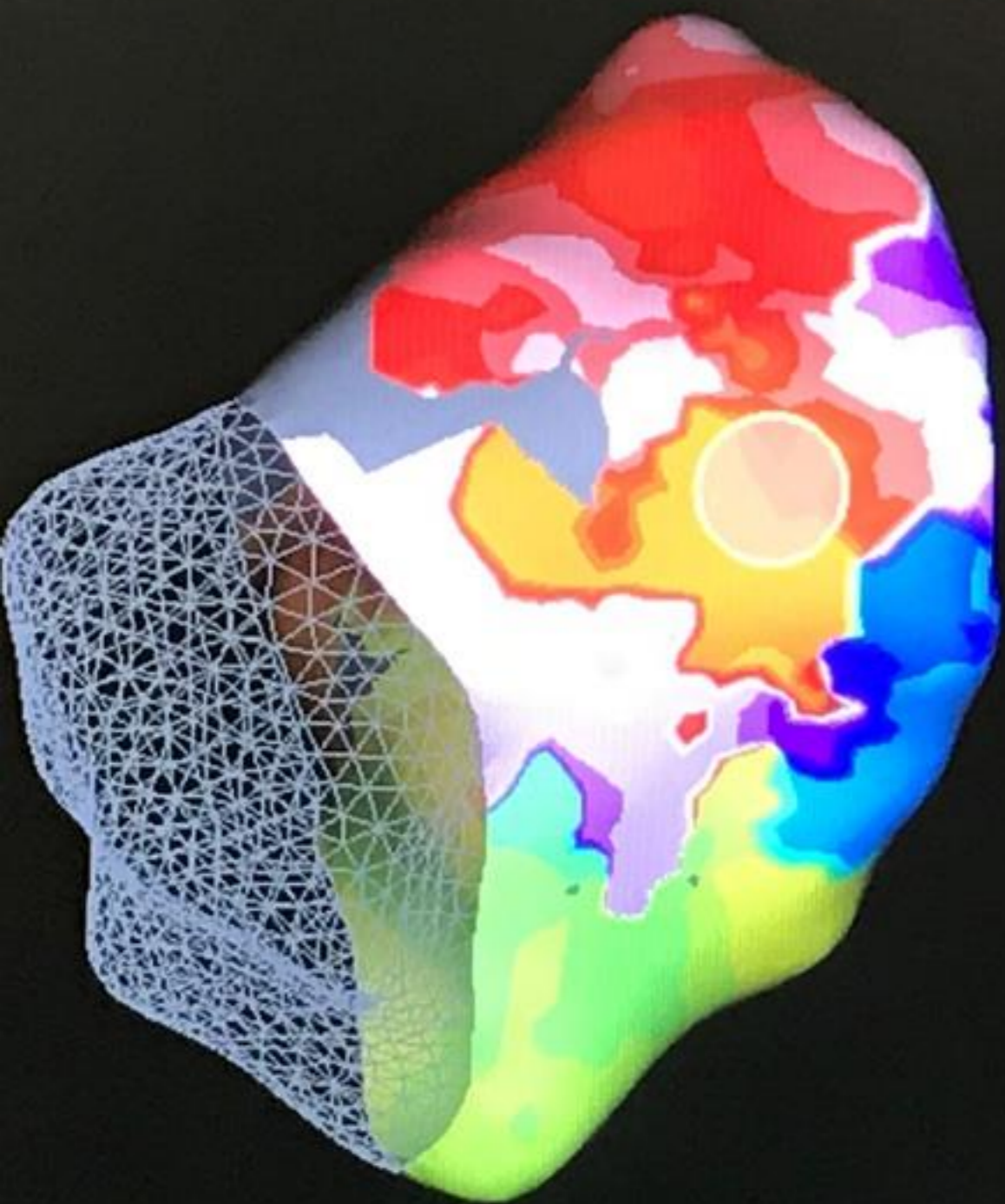


Biatrial flutter

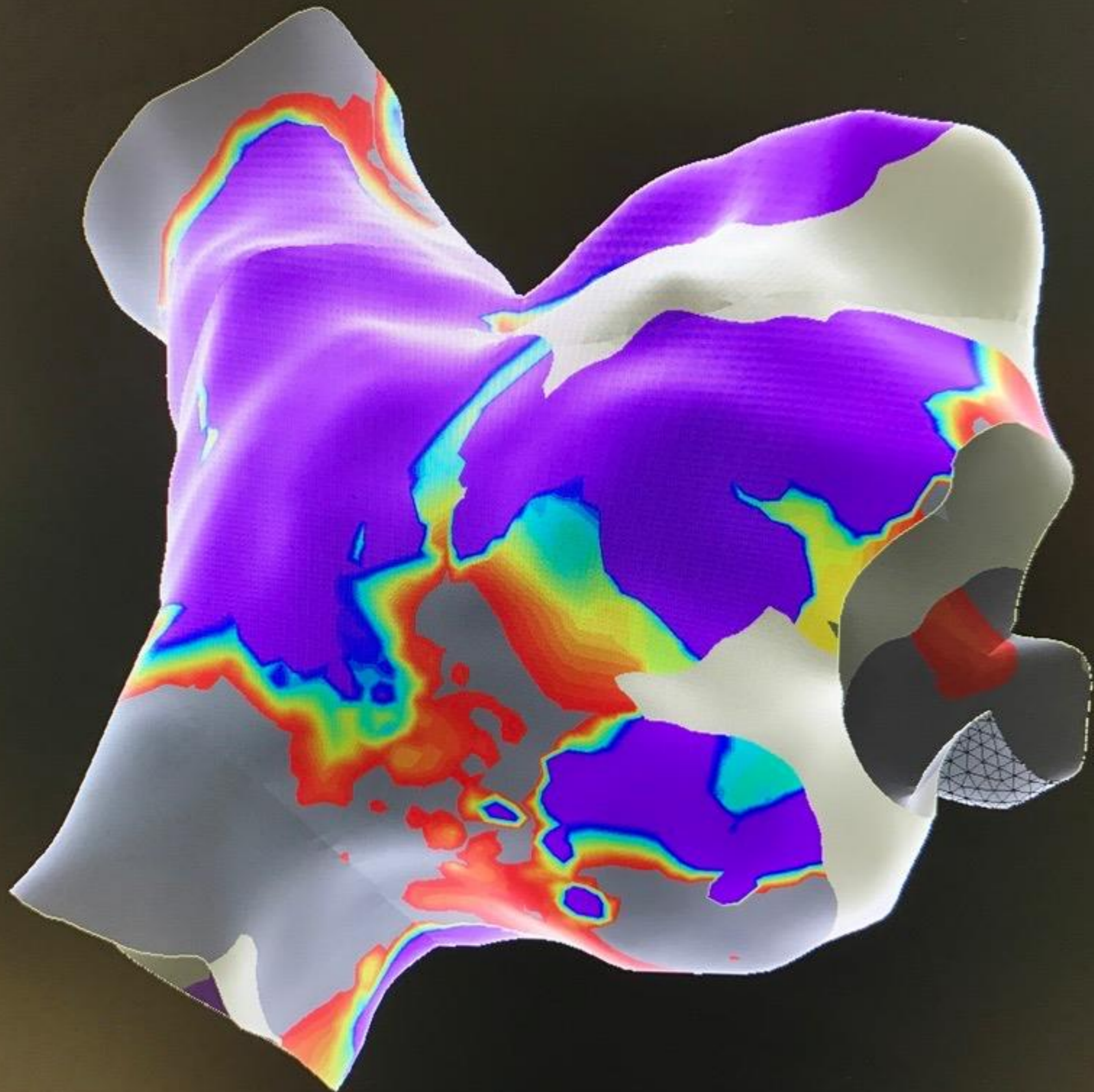


Reflection Reentry









Pectinate muscle



A matter of circles



Bachmann's Bundle

Marshall's bundle

Coronary sinus

